

Stamisol® DW – Installation on wainscoting/wooden panels

Different insulation systems for roofs with semi-ventilated sides.

1. **Cross laths**
with joints for nails or screws
2. **Stamisol® DW laid horizontally or vertically**
Glue the overlaps and connections using the Stamisol glue
3. **Wainscoting or wooden panels**
4. **Total insulation of the rafters using diff. systems**
5. **ABS or Stamisol® SD 70 vapour breaks**
The overlaps and connections should be glued using the Stamisol® self-adhesive strips so that the air seal is tight.
If necessary, fix the wall connections using the butyl rubber or, for example, with Sikaflex 11FC.
6. **Space left for the electric cables**

Tender text reference

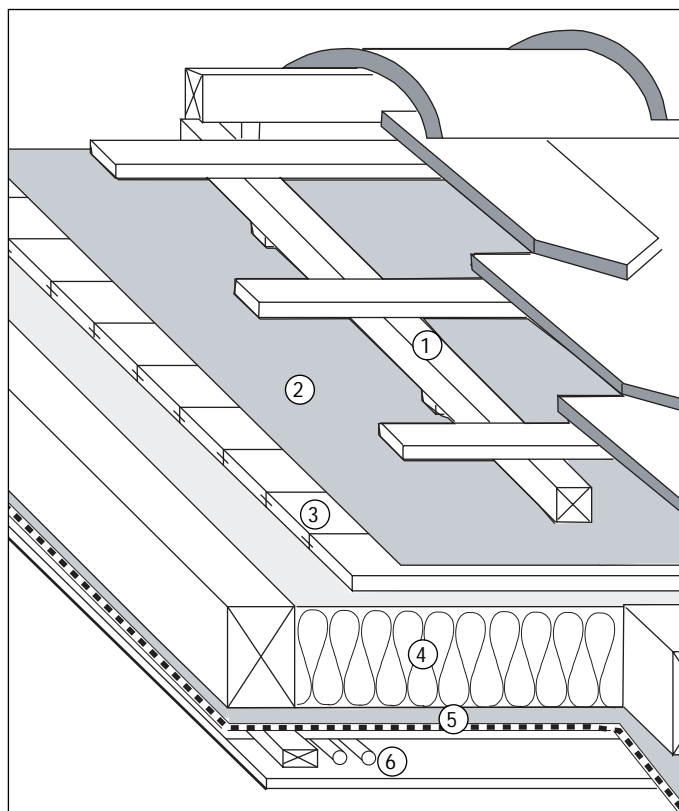
Stamisol® DW
Pos. 721.171

ABS

Pos 520.200
Pos 524.120
Pos 524.221
Pos. 565.100

SD 70

Pos.542.200
Pos 524.210
Pos 524.121
Pos 565.100



Planning reference

Stamisol® DW can be installed and glued both horizontally and vertically.

Depending on the layout of the building, the vapour breaks will have to be adapted to the construction of the roof in question.

Installation instructions

The instruction specifications must be respected.

The entire thickness of the rafters must be entirely insulated (in line with the recommendations of the manufacturer of the insulation).

Planning and execution: according to SIA 238
New SIA 232

